

Editable Social Studies Escape Room FOR ANY CONCEPT



ESCAPE ROOM Print Checklist

To Print	Considerations
Station Titles (pg. 18-21)	1 copy (on cardstock if possible), to be used throughout the day.
	Place two at each station, and make a card gets damaged.
	Description for the correct number of
	for you to reset the room between all of the clue cards. Instead of

Building Your Escape Room Planning Checklist

Brainstorming
This is the set-up for using the Starter Escape Room. This is a review activity for any ELA novel, play, or short story.

Plot
List plot points (Exposition, 2 Rising Action, Climax, 2 Falling Action, Resolution). List five distractors (this can be related to characters or subplots).

Characters
Who are the most important characters in this text? (8 or 10) What are their most memorable quotes or descriptions? Quotes and/or descriptions can range from 1-2 sentences, but ideally 1-2 sentences without a book.

Close Read
Are there some key passages in this text? This should be a close read of a passage. When they answer multiple-choice questions correctly, their answers will reveal a key.

2. CHARACTERS & QUOTES
Create your Character Cards with descriptions and/or quotes of ten characters. This requires a little planning, because you want to edit your Answer Sheet so that certain letters of the characters' names spell out a word. Here's an example:

Starter Escape Room
This is a very basic Escape Room template that can be used to review a novel or play. For many more options, check out the **Guide** and **Template File** to learn how to build your own puzzles.

This Escape Room has four tasks: Plot, Characters & Quotes, a Close Read, and an Encrypted Message that reveals a quote. Additionally, students will collect parts of a Pigpen Cipher to solve this final task.

To view and use this Very Basic Escape Room, please download and install these **free fonts**:
[Pigpen Cipher Font](#) [KG Sans Not Sans](#) [KG Eyes Wide Open](#)

1. PLOT
Students find Plot Cards in the classroom and then put them in the correct order. When they have correctly identified and ordered the plot points, they will enter seven numbers into their Answer Sheet to reveal a key.

CHARACTERS & QUOTES
Character Cards in the classroom. These are quotes said by characters from your text and/or characters. They then write the correct character name on their Answer Sheet. The shaded area is a key.

CLOSE READ
Complete a close reading of a passage. When they answer multiple-choice questions correctly, their answers will reveal a key.

ENCRYPTED MESSAGE
Students find parts of a Pigpen Cipher as they progress through the rest of the puzzle. They then solve the encrypted message, which will reveal a quote from your text OR a quote you've chosen that is related to your text or content. The default quote is "The course of true love never did run smooth", but should change this to suit your purposes. The revealed quote is the **key**.

Preparing this Room
For best results, please create a copy of this resource before editing it. This will ensure that you can "start from scratch" if you feel you've made a mistake.

1. PLOT
There are twelve Plot Cards included for you to edit. In order to reveal the key 7 1 4 10 2 11 6, please enter the plot points as described on the template.

To create this, you'll need to write out seven plot points from your text. You'll also need five distractors, which can be

TASK #1: Plot

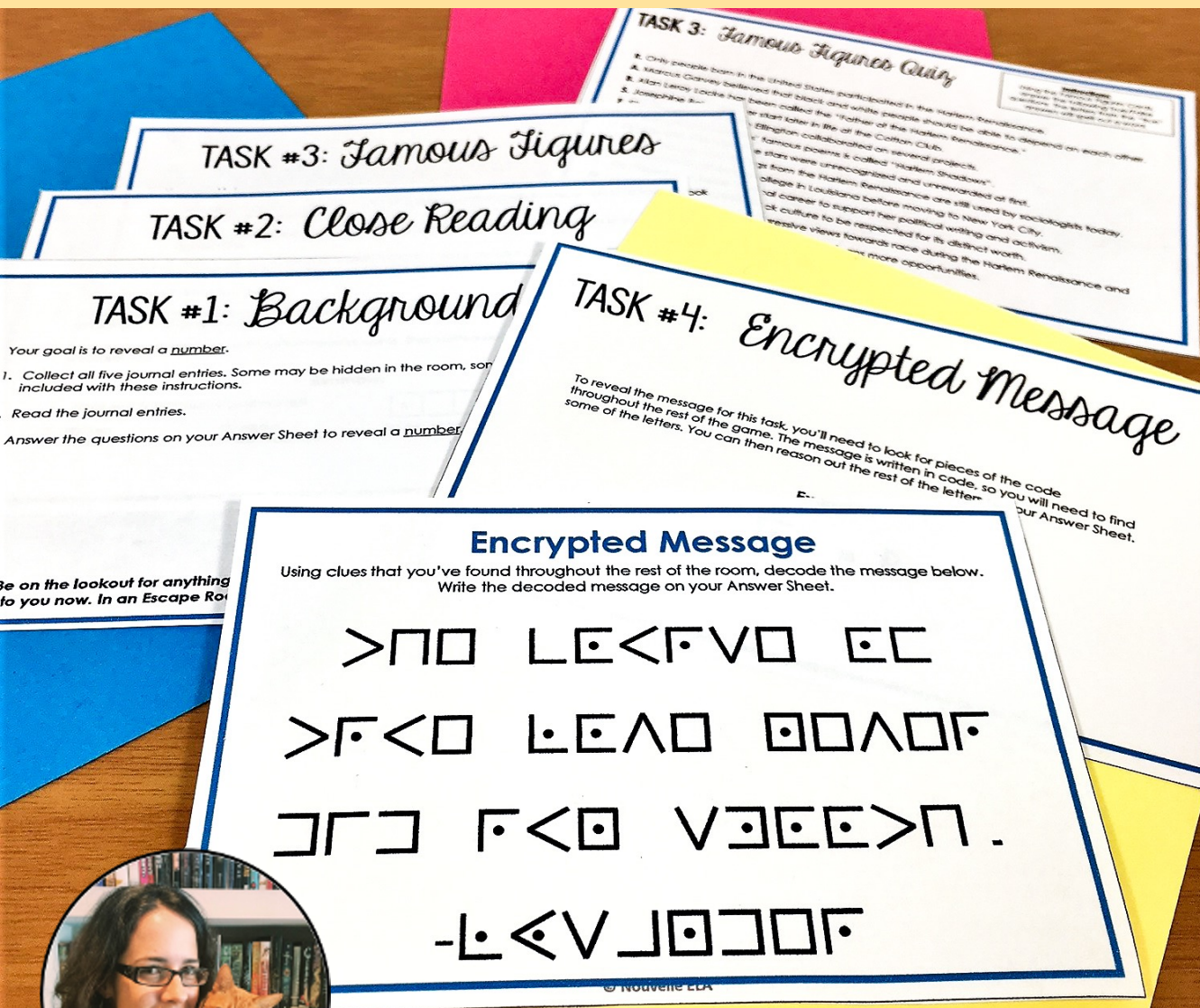
TASK #2: Characters

TASK #3: Close Reading

TASK #4: Encrypted Message

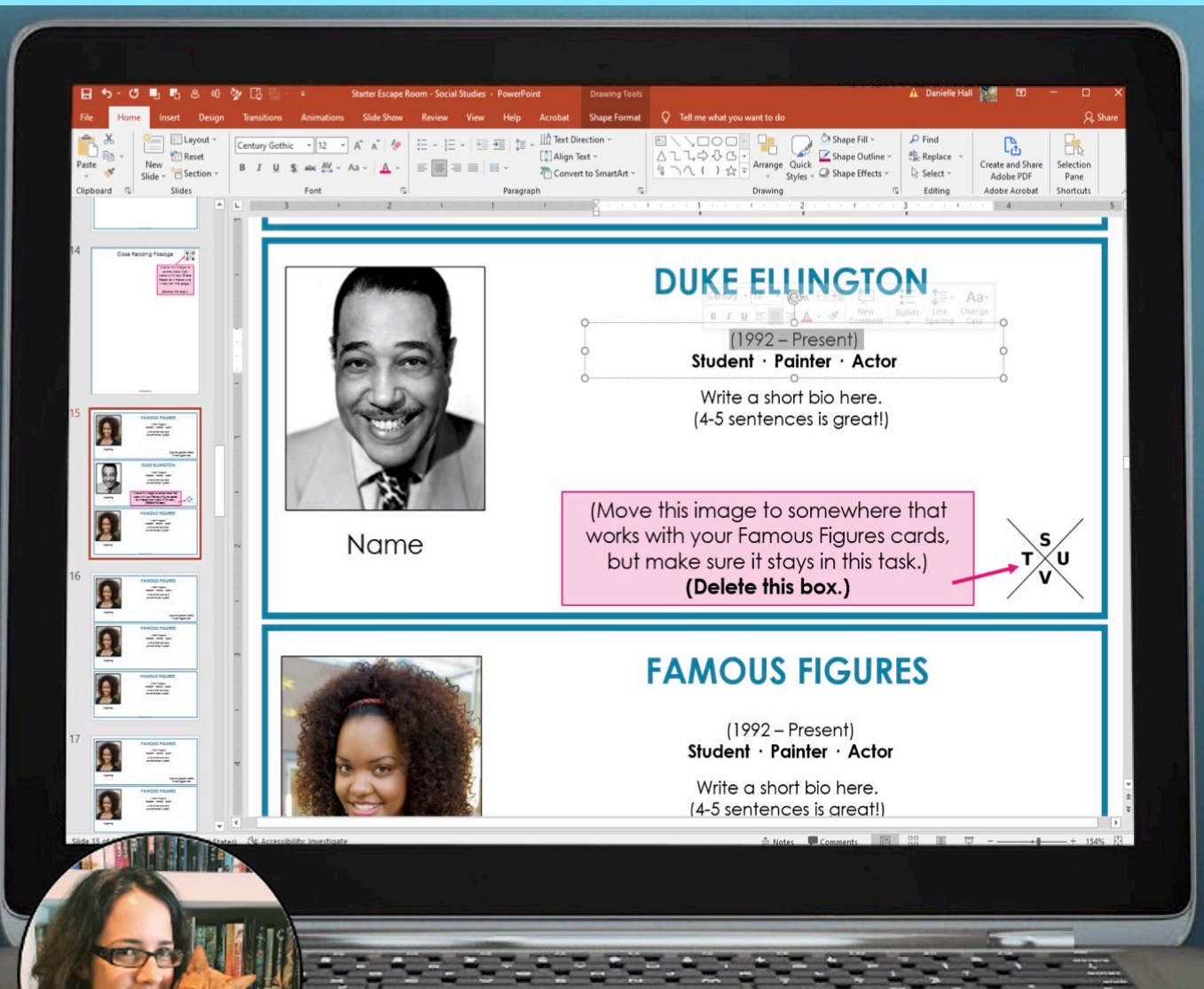
Using clues that you've found throughout the rest of the room, decode the message below. Write the decoded message on your Answer Sheet.

Encoded Message:
>Π Λ<ΓVΠ Ε<
>Γ<Π Λ<ΓVΠ Ε<
ΓΓ Γ<Γ VΓΓΓ>Π.
-Λ<ΓVΓΓΓΓΓ



Four editable tasks:

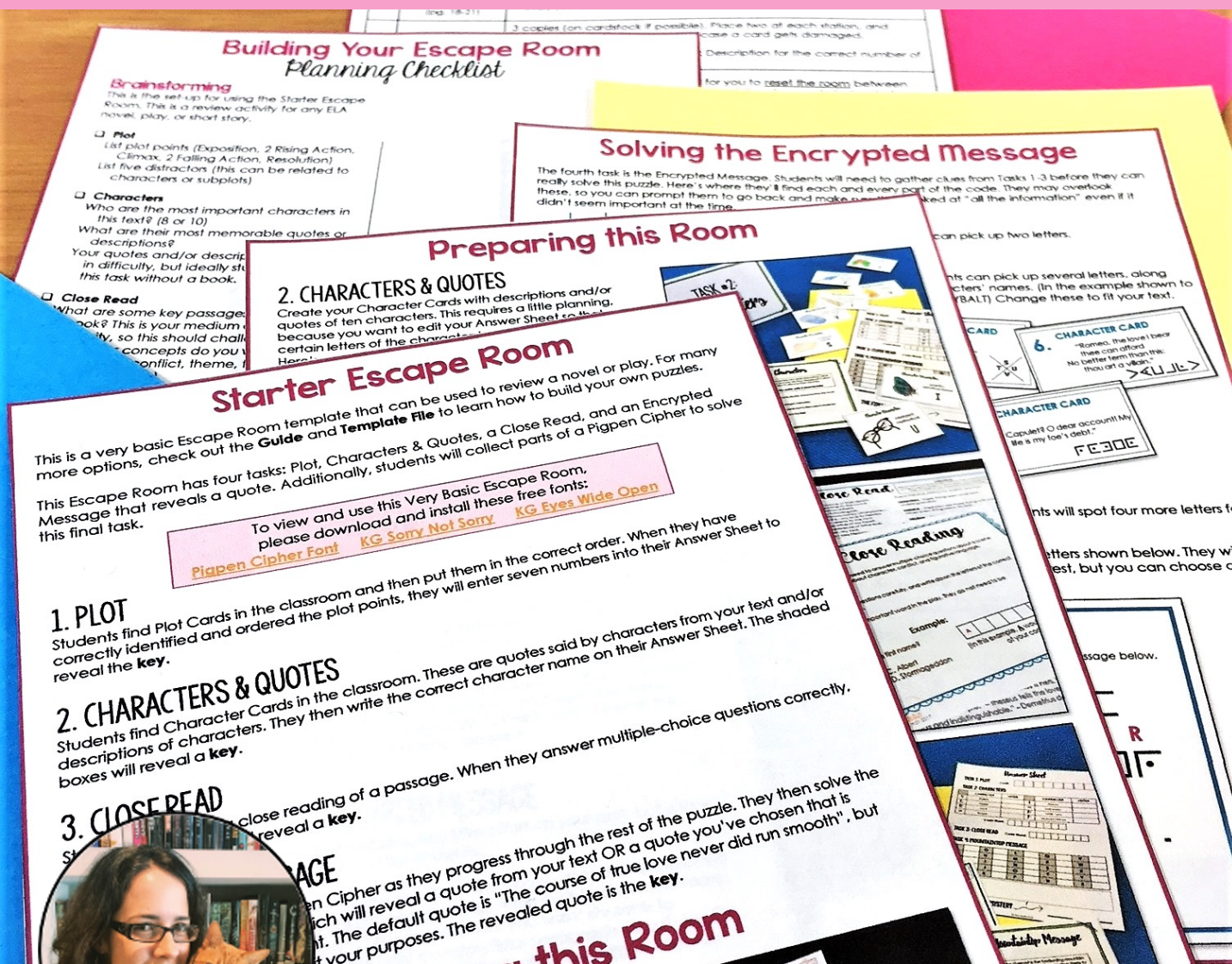
- Background (easy)
- Close reading (hard)
- Encrypted message (medium)
- Profiles or Vocabulary (medium)



Organized from start to finish:

- Follow the instructions
- Insert your information from any unit into the clue cards
- Print and go!





Includes an intro to editing the resource, a brainstorming sheet, a printing checklist, & editable answer sheet for students



What other teachers are saying...

SO easy to set up - even for four different texts for four different classes! Easy to fit multiple grade levels as learning levels - honors and regular.

...puts classroom teachers in the driver's seat... the organization part is set up so teachers can focus on content and student success!

This was so easy to use when I know I would have been lost and frustrated on my own!

Super cool. Super relevant. Easily adaptable. Highly rigorous and engaging. Boom. Done. What more could you ask for?